



Shinhung.co.,Ltd.

450, Cheongpa-ro, Jung-gu, Seoul, Korea
Tel : 82-2-6366-2175 / Fax : 82-2-6366-2131
E-mail : export@shinhung.co.kr
www.shinhung.com

Shinhung Dental INC

6131 Orangethorpe Ave Suite 410, Buena Park, CA 90620, USA
Tel : 562-550-0001
E-mail : yohan@shinhungdental.com
www.shinhungdental.com

B I T E
I M P R E S S I O N
C O P I N G

Bite Impression Coping

Take impressions and bite registrations in one step
Easily get more accurate impression taking

Rectangular Upper Structure

Exact and accurate coping positioning
Even with slanted fixture or narrow mesiodistal dimension,
it is easy to take impressions

Short Height

The head screw is lower than adjacent teeth
Take impressions and bite registrations in one time
Save time and materials



Unique Impression Coping Driver

Easily and safely carry and place
bite impression coping



Lower Cervical Groove

Ensure coping is connected accurately
by x-ray

Various Sizes

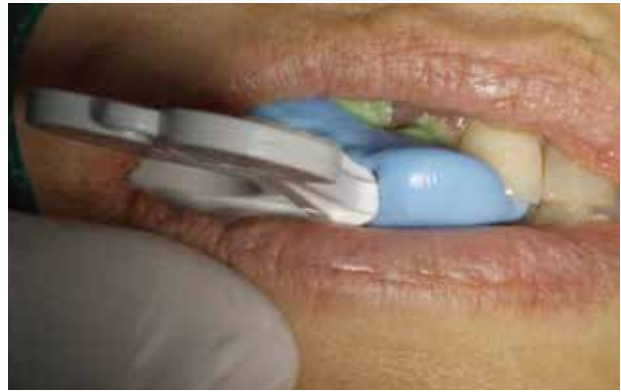
Easy and exact impression
with short impression coping
for minimal Interocclusal clearance &
with long impression coping
for deeply implanted fixture or high gingiva



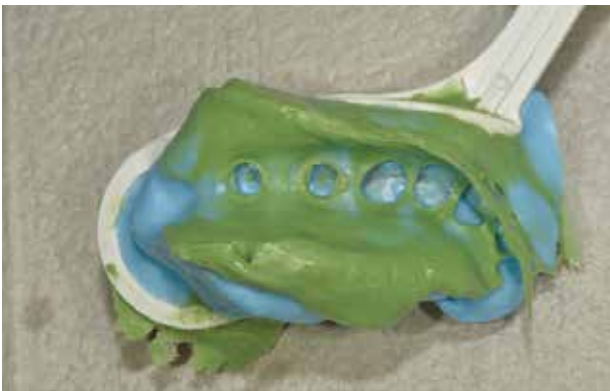
How to use bite impression coping



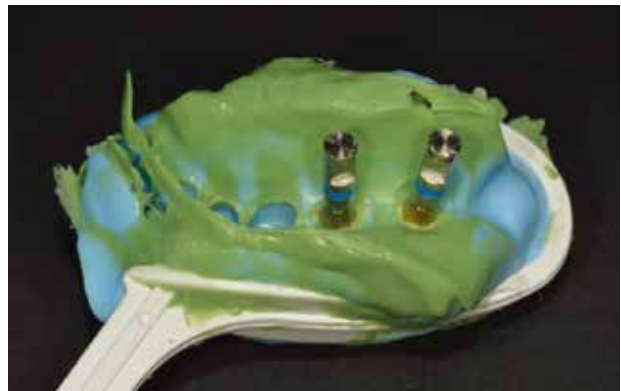
Place bite impression coping in each implant position



Take impression and bite registration with bite tray at once



Obtain an impression with bite tray and putty/regular body



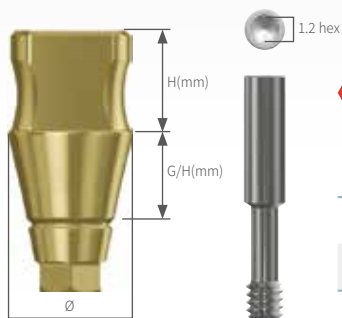
Analogues were connected to the impression copings and the coping-analog assemblies were reinserted in the impression

Tips for using bite impression coping

- 1** For accurate impression taking, use viscous and hard-setting materials. One step impression process using putty and regular body is advised.
- 2** With special driver, It is simple to connect impression coping to the implant fixture and there'll be less chance of swallowing it.
- 3** Single and 2 implant placement cases are recommended.
- 4** Stable impression taking is possible without plastic cap. (No additional costs)

Line-up

Luna S (Internal Submerged)



NP
Ø5.0

H	4	4	4	6	6
G/H	2	3	4	4	6

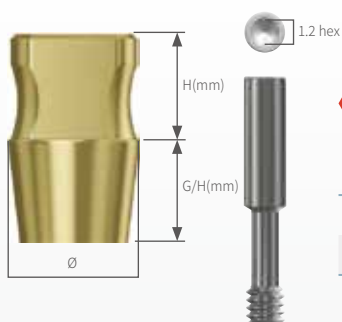
RP
Ø5.0

H	4	4	4	6	4	6	6
G/H	2	3	4	4	5	5	6

RP
Ø6.0

H	4	4	6	4	6	6
G/H	3	4	4	5	5	6

Sola S (External)



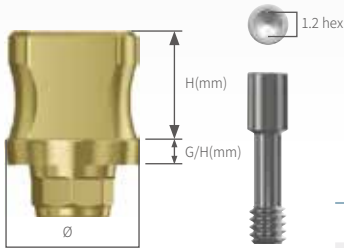
NP WP
Ø5.0

H	4	4	6	6
G/H	2	4	4	6

RP
Ø5.0

H	4	4	6	4	6	6
G/H	2	3	3	4	4	6

Stella (Internal Non-Submerged)

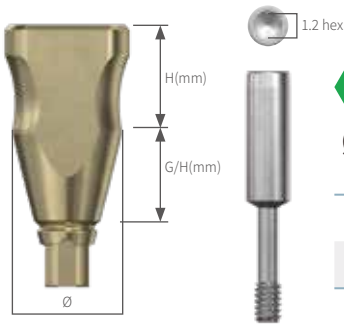


RP
Ø5.0

WP
Ø6.0

H	3	4	4	6
G/H	1	1	2	2

Straumann BLT (Internal Submerged)



SC
Ø4.0

H	4	4	4	6	6
G/H	2	3	4	4	6

NC
Ø5.0

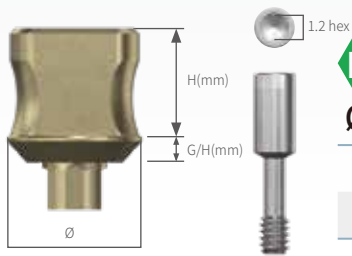
H	4	4	4	6	6
G/H	2	3	4	4	6

RC
Ø5.0

H	4	4	4	6	4	6	6
G/H	2	3	4	4	5	5	6

Line-up

Straumann ITI (Internal Non-Submerged)



NNC
Ø4.0

H	3	4	4	6
G/H	1	1	2	2

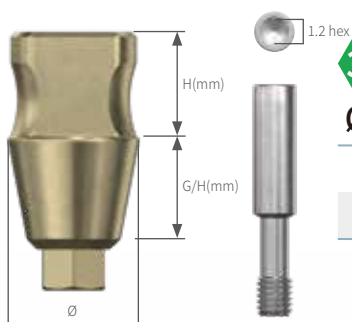
RN
Ø5.0

H	3	4	4	6
G/H	1	1	2	2

WN
Ø6.5

H	3	4	4	6
G/H	1	1	2	2

Zimmer TSV (Internal Submerged)



3.5D
Ø5.0

H	4	4	4	6	6
G/H	2	3	4	4	6

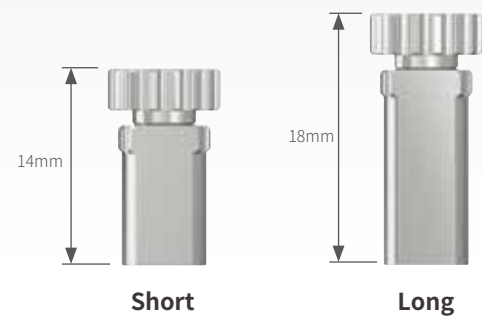
4.5D
Ø5.0

H	4	4	4	6	4	6	6
G/H	2	3	4	4	5	5	6

5.7D
Ø6.5

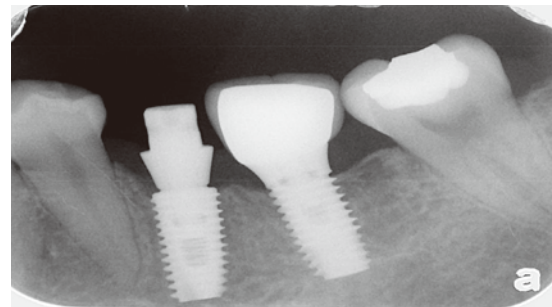
H	4	4	4	6	4	6	6
G/H	2	3	4	4	5	5	6

Bite Impression Coping Driver



Clinical Cases

Posterior
long span
case



Short
impression
coping
case

